

Credentials Manager Version 1.0

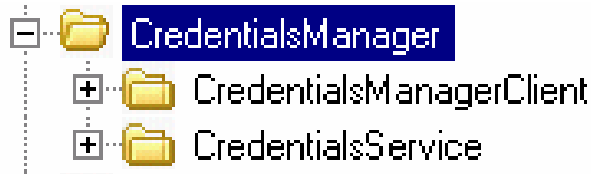
Author: Juval Lowy

Installation.....	2
Web Service Installation	2
Installing the aspnetdb Database.....	4
The Application Tab.....	5
The User Tab	6
The Roles Tab	7
The Password Tab	8
The Credentials Service Tab.....	9

Installation

Web Service Installation

After unzipping the source files, you should have the following folder structure:



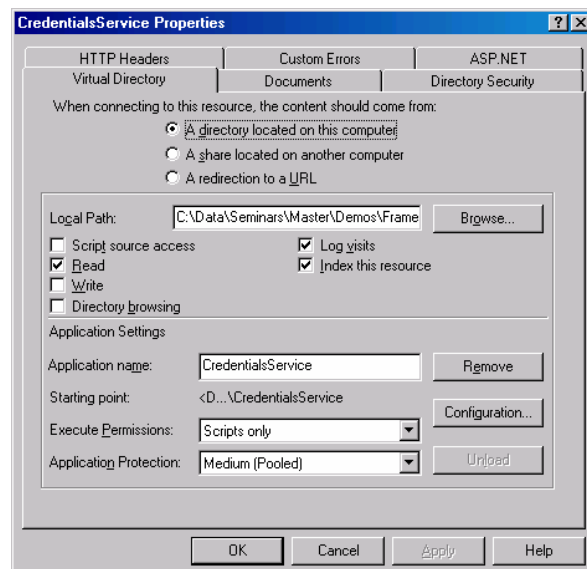
You need to add the CredentialsService folder as an IIS web service.

Follow these steps:

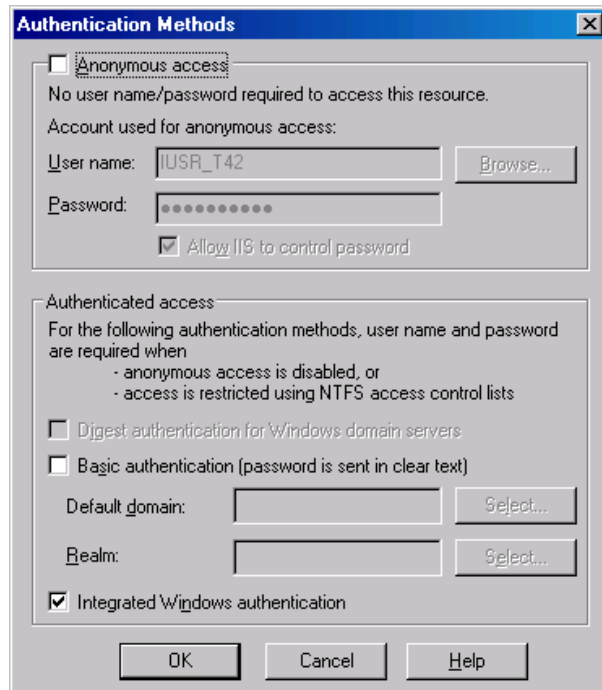
1. Open the IIS control Panel applet (Control Panel->Administrative Tools -> Internet Information Services).
2. Right-click on the Default Web Site, and select New-> Virtual Directory...
3. Click Next.
4. Specify CredentialsService for the Alias and click Next.
5. Click the Browse button, navigate to where the CredentialsService folder is located, select it and click next.
6. Click Next.
7. Click Finish.

Next, you need to configure security for the web service.

1. Right-click on the CredentialsService virtual directory in IIS, and select Properties.



2. Select the Directory Security tab, and click the Edit... button.
3. Uncheck anonymous access and check Integrated Windows authentication.



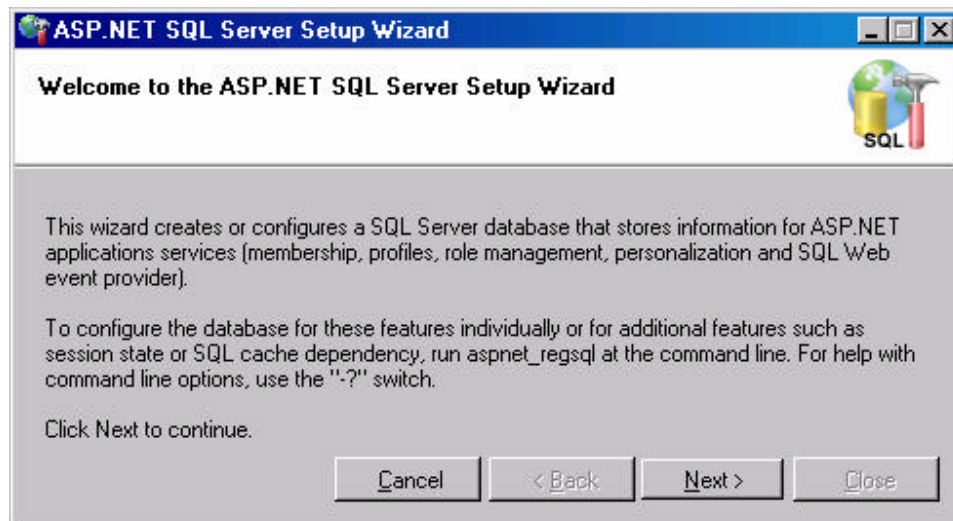
4. Click OK.

Installing the aspnetdb Database

Run the setup file *aspnet_regsql.exe* setup program, found after normal installation under:

| <WINDOWS>\Microsoft.NET\Framework\<version> |

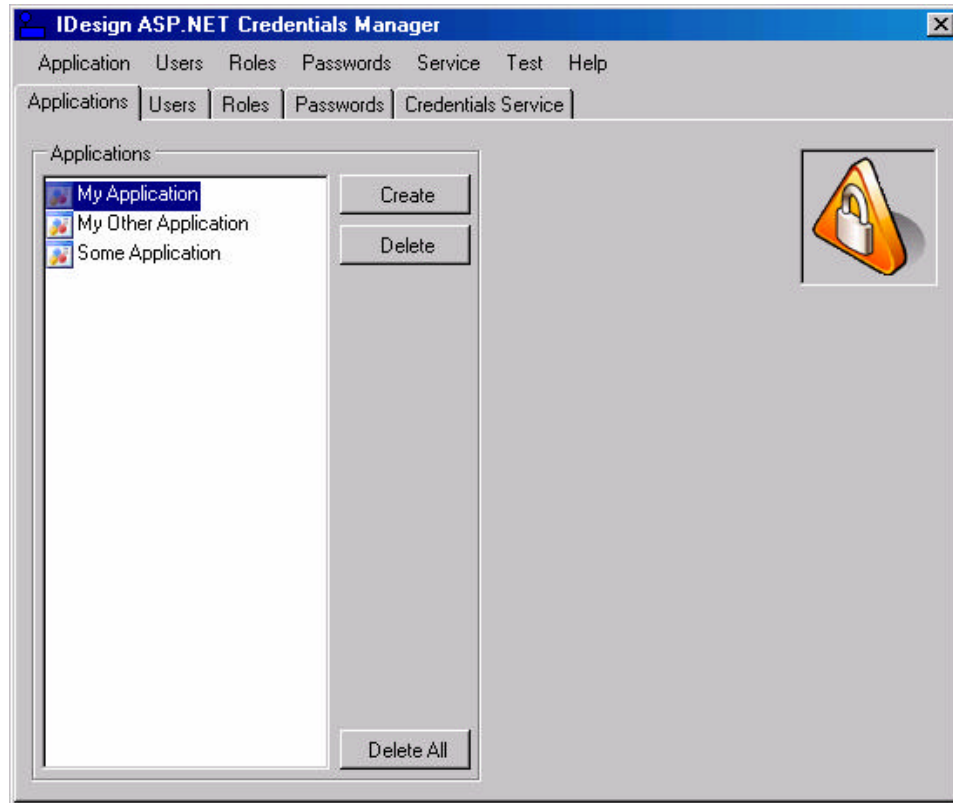
This will bring up the ASP.NET SQL Server Setup Wizard:



Follow the steps in the wizard.

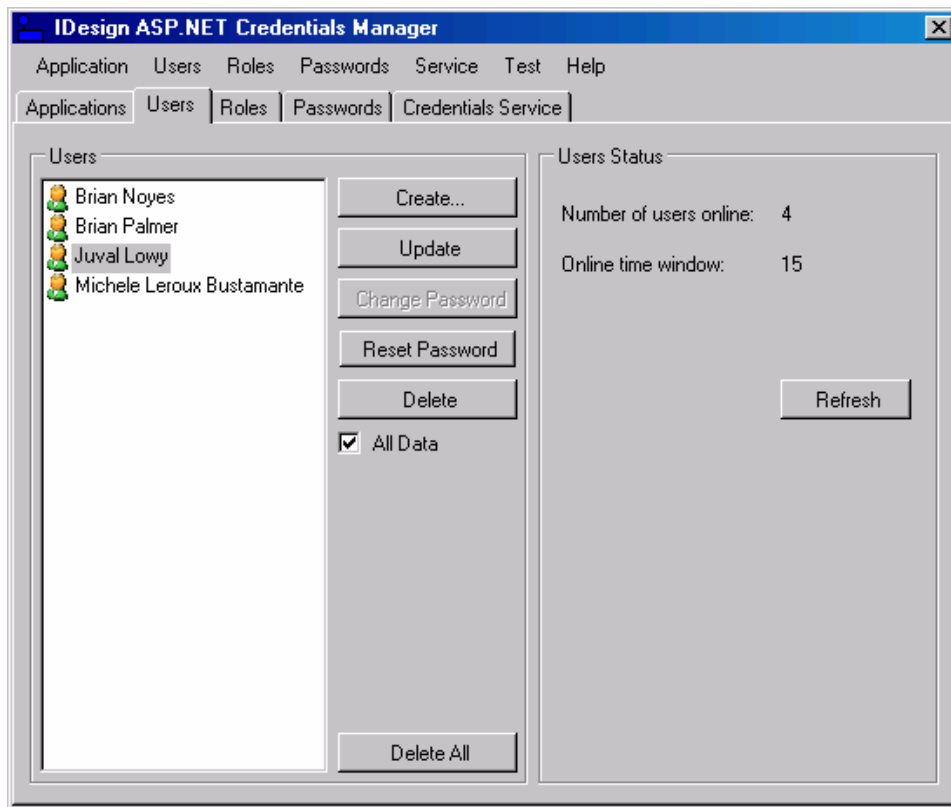
The Application Tab

The Applications tab shown in allows you to select which application to configure. Selecting an application here affects all the other tabs, that is, all users and roles in the other tabs pertain to the selected application in the Applications tab. You can create and delete an application or all applications.



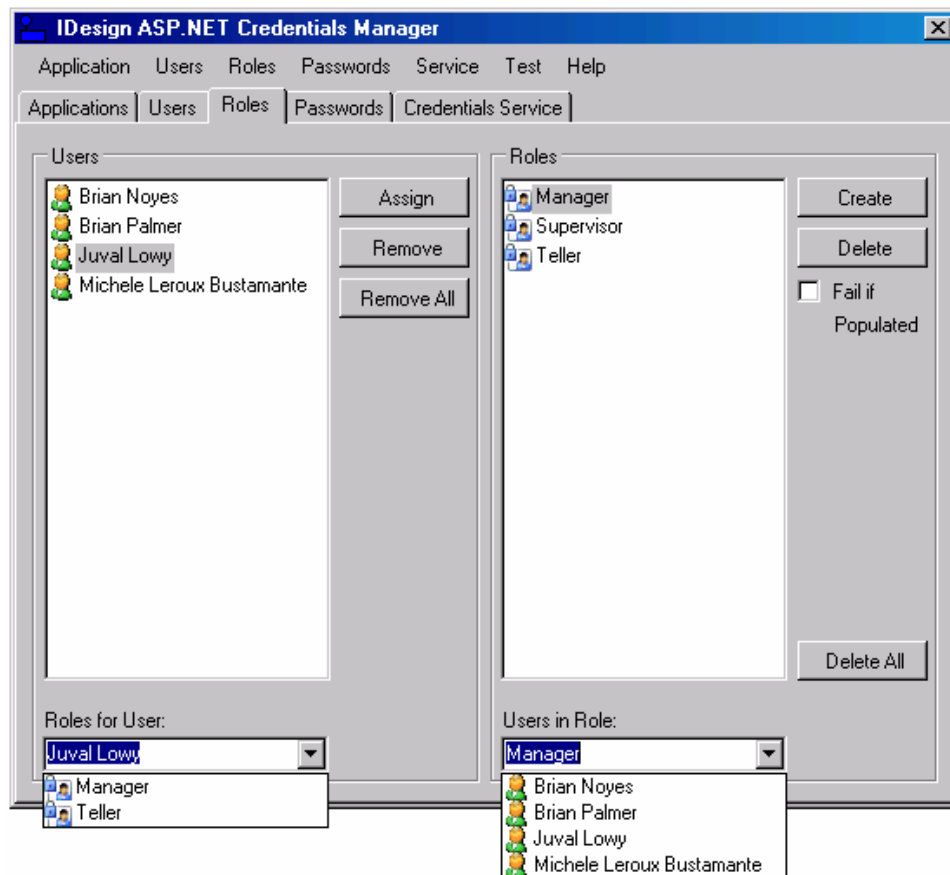
The User Tab

The Users tab lists all the users in the selected application. You can create or delete a user. If you delete a user but leave the All Data checkbox unchecked, it will delete the user but maintain its role membership information. You can update a user account, or delete all users. Depending on the password policy returned from the web service, you may or may not be able to change or reset the password, and may or may not need the password answer. The buttons on the tab and the dialogs it displays are enabled or disabled accordingly. On the right-hand side of the Users tab are statistics such as the current number of users on-line.



The Roles Tab

The Roles tab allows you to add roles to the application. When deleting a role, if the “Fail if populated” checkbox is checked, it will not let you delete the roles if it has any members. The left-side list view shows all the users in the application. You can add or remove a user from a role, or remove a user from all the roles. At the bottom, the “Users in role” combobox shows all the users in the selected role above, and the “Roles for User” combobox shows all the roles for the selected user above.



The Password Tab

The password tab shows the configured password policy, and allows you to generate a password that complies with the specified password strength policy.

The screenshot shows a window titled "IDesign ASP.NET Credentials Manager" with a menu bar (Application, Users, Roles, Passwords, Service, Test, Help) and a tab bar (Applications, Users, Roles, Passwords, Credentials Service). The "Passwords" tab is active. It is divided into two panes. The left pane, titled "Setup", contains a list of password policy settings: "Password reset enabled: Yes", "Password retrieval enabled: No", "Max invalid attempt allowed: 5", "Min non-alphanumeric characters: 1", "Min required length: 7", "Attempt window: 10", "Password regular expression:", and "Requires question and answer: Yes". The right pane, titled "Generate Password", contains two input fields: "Length:" with the value "7" and "Non-alphanumeric:" with the value "1". A "Generate" button is located to the right of the "Length:" input field.

Setup	
Password reset enabled:	Yes
Password retrieval enabled:	No
Max invalid attempt allowed:	5
Min non-alphanumeric characters:	1
Min required length:	7
Attempt window:	10
Password regular expression:	
Requires question and answer:	Yes

Generate Password	
Length:	7
Non-alphanumeric:	1
<input type="button" value="Generate"/>	

The Credentials Service Tab

The Credentials Service tab lets you select the web service to use. Upon startup, the Credentials Manager application reads that address from the application configuration file. This tab displays the selected web service. If the address is invalid, that is, the service does not support the required functionality; all controls in the application are empty and disabled. You can provide a different address, and the web browser control below will display that service. However, you can only select a web service address (by clicking the Select button) if the service supports the required web methods (a valid web service). If the service is invalid, the Select button is disabled.

